



2 Gatliff Road, London, SW1W 8DT

£600,000



2 Gatliff Road, London, SW1W 8DT

£600,000

Barrain London presents this exceptional one bedroom apartment within the Moore House building of the exclusive Grosvenor Waterside development in SW1 in Chelsea.

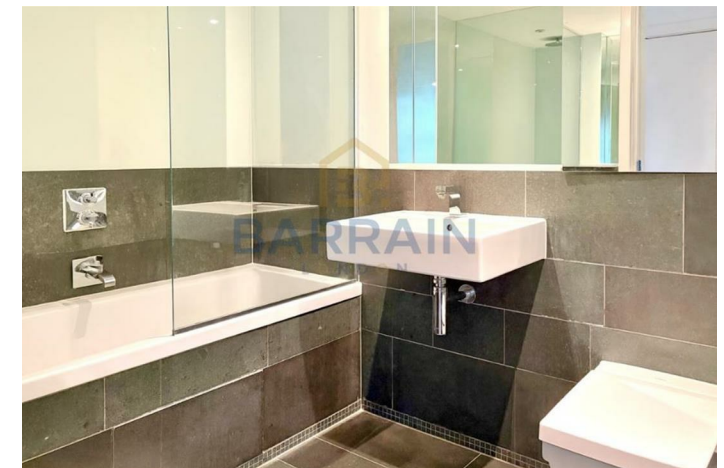
The modern open plan layout of the property includes a large reception area and fully integrated modern kitchen. Balancing this is the large, bright bedroom with extra storage. Space, style and refinement are on display here at every point, beginning in the elegant lobby.

Only a few minutes walk both to the Chelsea Embankment or Sloane Square, this luxury property is located in one of London's finest neighbourhoods. As the new owner, you will enjoy the convenience and luxury of having some of the world's most exclusive shops and restaurants on your doorstep, as well as the District Line Underground station at exclusive Sloane Square. This property features a 24/7 concierge with Spa and Gym access for the residents,

Enjoy luxury and quality in an premium location at exceptional value! Please call to confirm your attendance at the Open House on December 6!

## Key Features

- OPEN HOUSE ON 1:30-3:30PM January 10, 2026
- One Bedroom Luxury Apartment with fully fitted, stylish kitchen and integrated sound system
- 24 hour concierge, Spa, and Gym
- Thames riverside location opposite Chelsea Embankment
- Quick walk to Sloane Square District Line station
- World class shopping and restaurants in Kings Road and Sloane Avenue

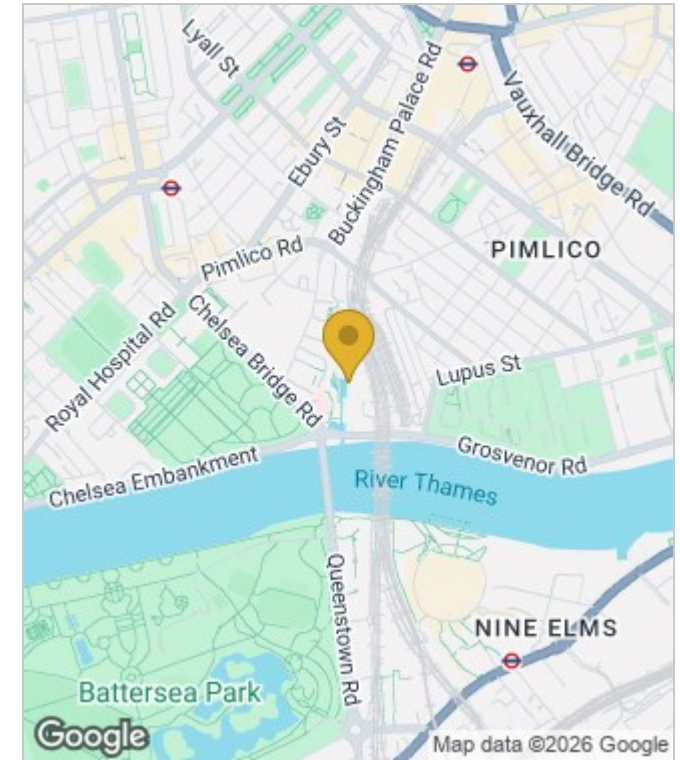


Council Tax Band: E

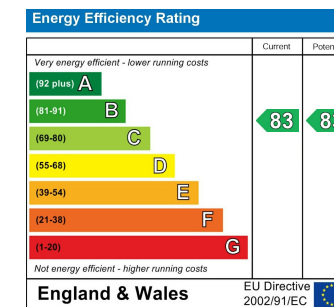
## Floor Plans



## Area Map



## Energy Performance Graph



These particulars, whilst believed to be accurate are set out as a general outline only for guidance and do not constitute any part of an offer or contract. Intending purchasers should not rely on them as statements of representation of fact, but must satisfy themselves by inspection or otherwise as to their accuracy. No person in this firm's employment has the authority to make or give any representation or warranty in respect of the property.